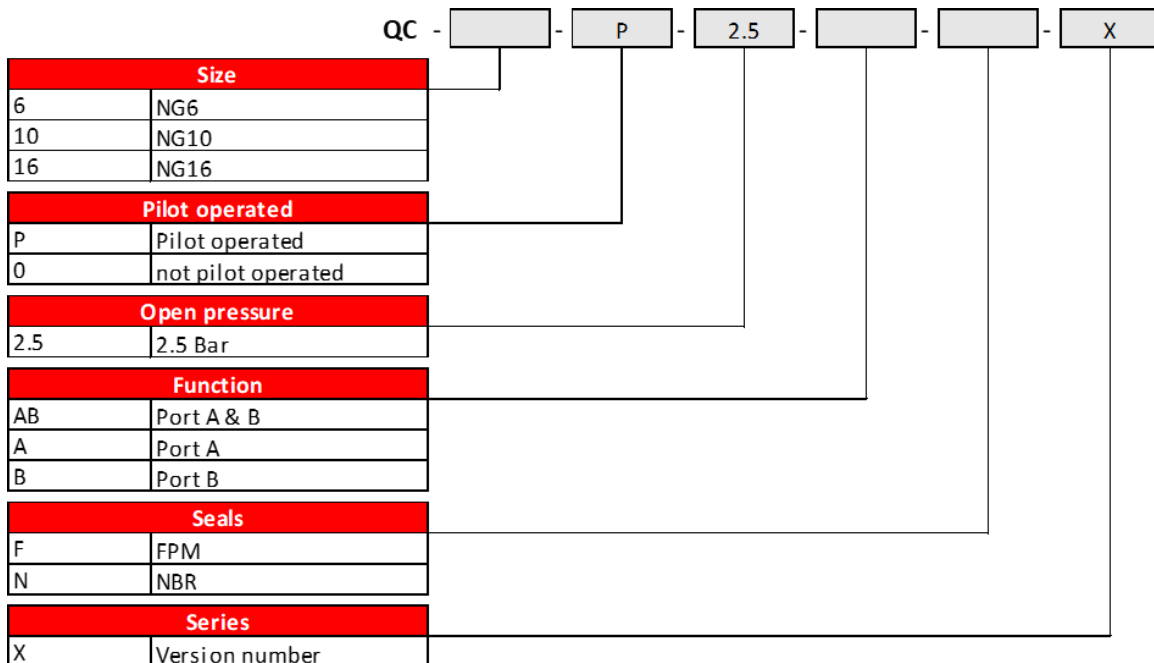




**Product features**

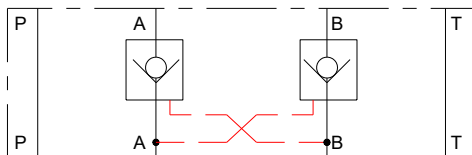
The valve flows the fluid in one direction. In the opposite case, it is closed without leaking. The control piston can push the check valve out and create a countercurrent flow. The valve is usually used to protect the pressure of components.

**Model Code**

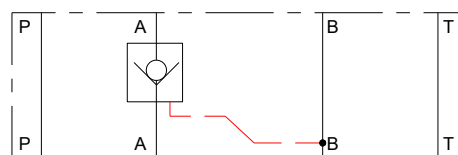


**Graphic symbol NG6 / NG10 / NG16**

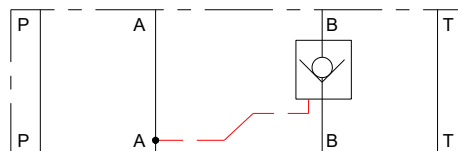
AB



A



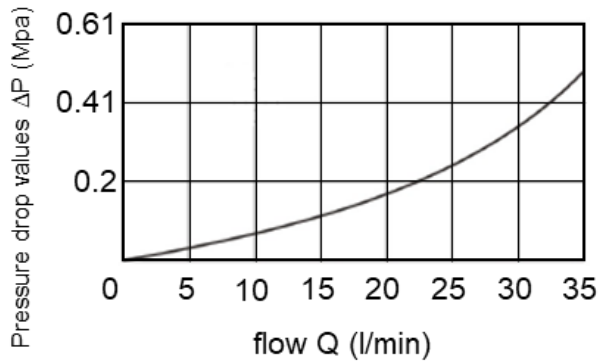
B



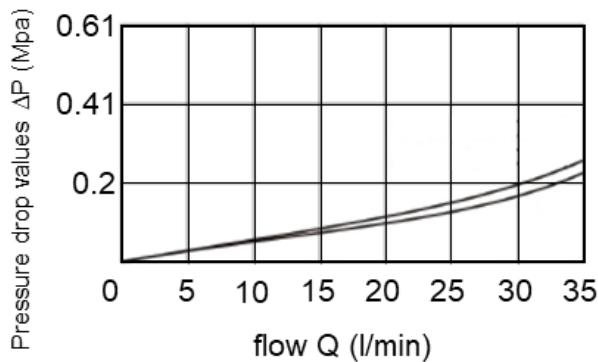
**Technical data NG6**

| Size | The maximum pressure [Bar] | The maximum flow [l/min] | Weight [kg] |
|------|----------------------------|--------------------------|-------------|
| 6    | 210                        | 35                       | 1.1         |

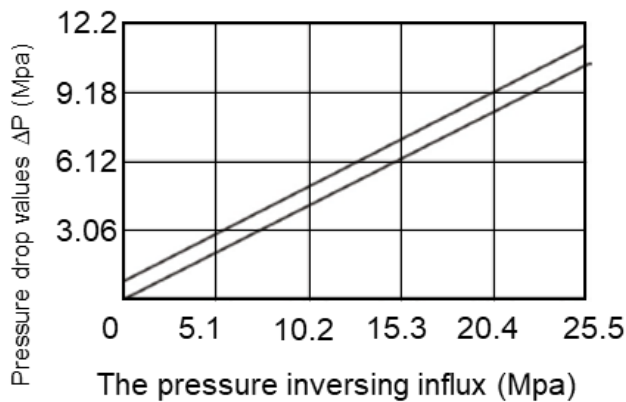
Pressure drop characteristics of inverting free flow



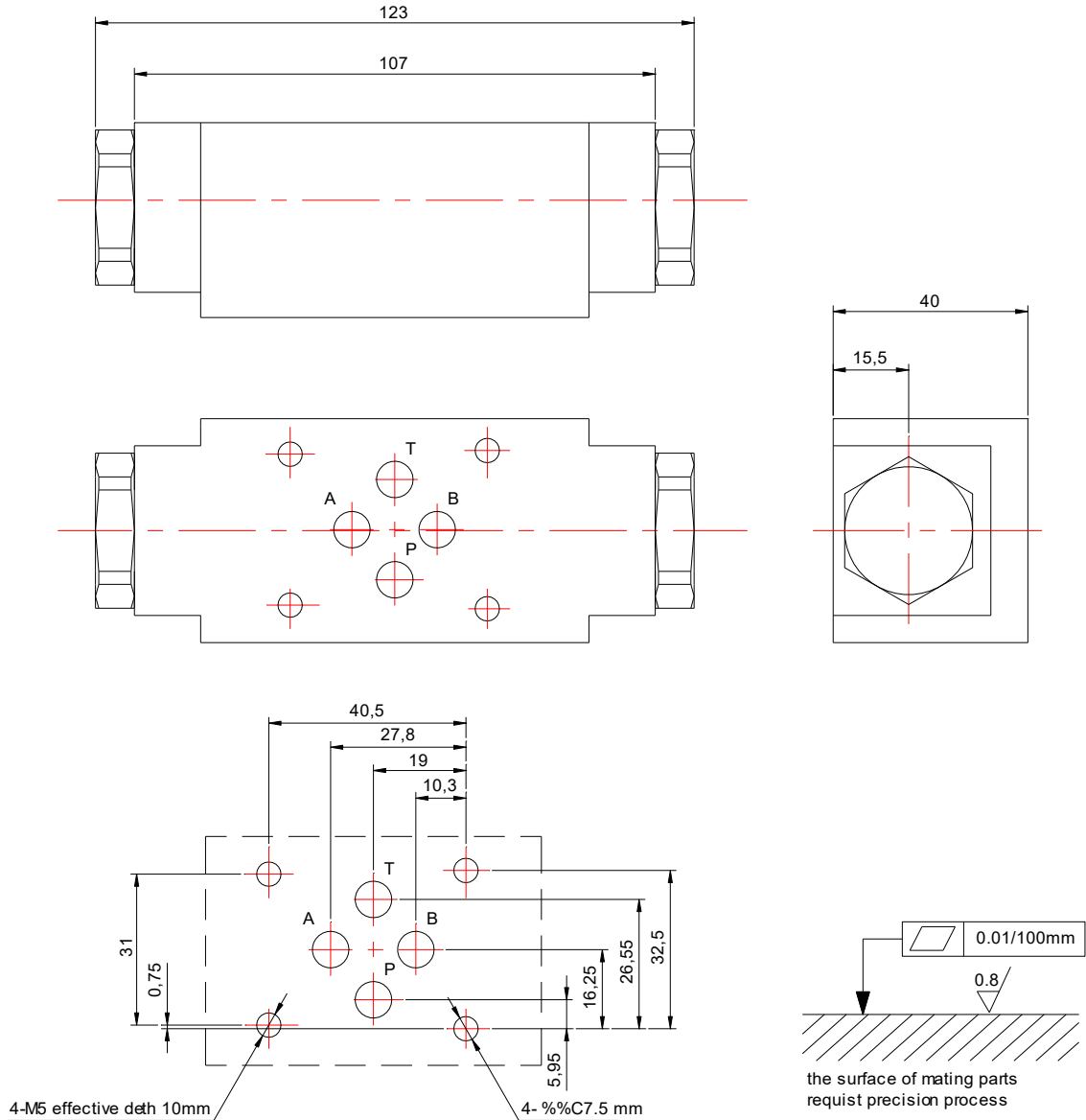
Pressure drop characteristics



The characteristics of the minimum pilot pressure



**Installation Dimension NG6**



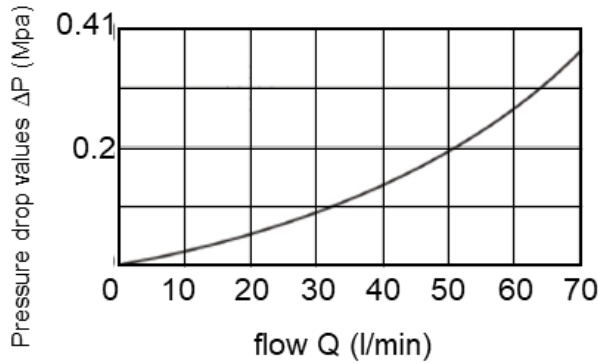
**Ordering codes (most frequently used)**

| Article code | Description           | Remark |
|--------------|-----------------------|--------|
| QC100001     | QC-6-P-2.5-AB-F-X     |        |
| QC100002     | QC-6-P-2.5-A-F-X      |        |
| QS100001     | Sealing set QC size 6 |        |

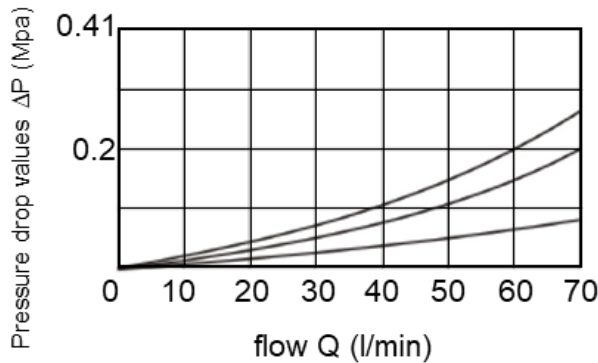
**Technical data NG10**

| Size | The maximum pressure [Bar] | The maximum flow [l/min] | Weight [kg] |
|------|----------------------------|--------------------------|-------------|
| 10   | 210                        | 70                       | 2.8         |

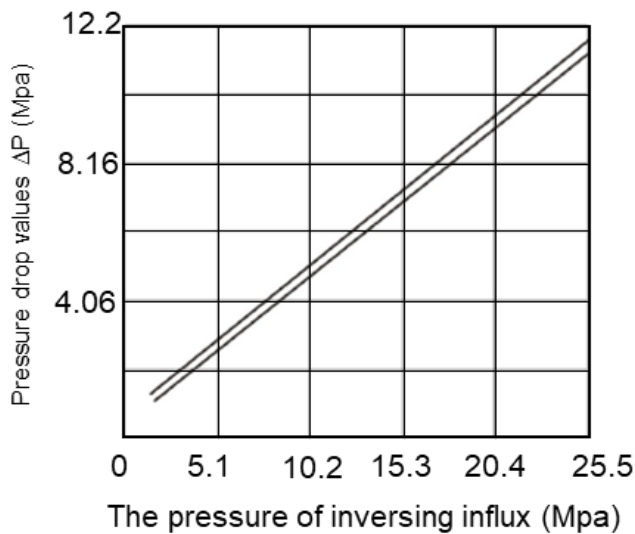
Pressure drop characteristics of inverting free flow



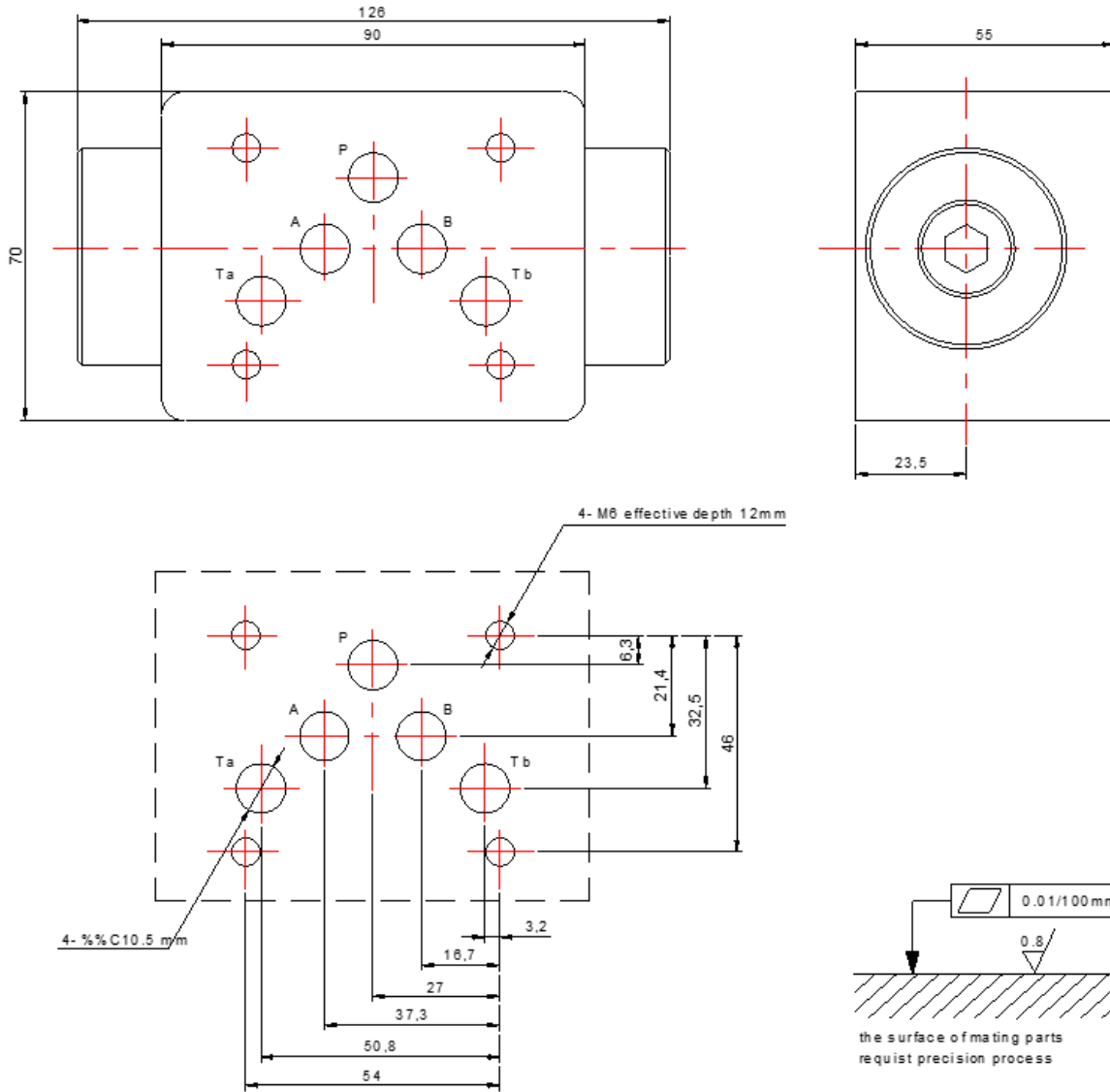
Pressure drop characteristics



The characteristics of the minimum pilot pressure



**Installation Dimension NG10**

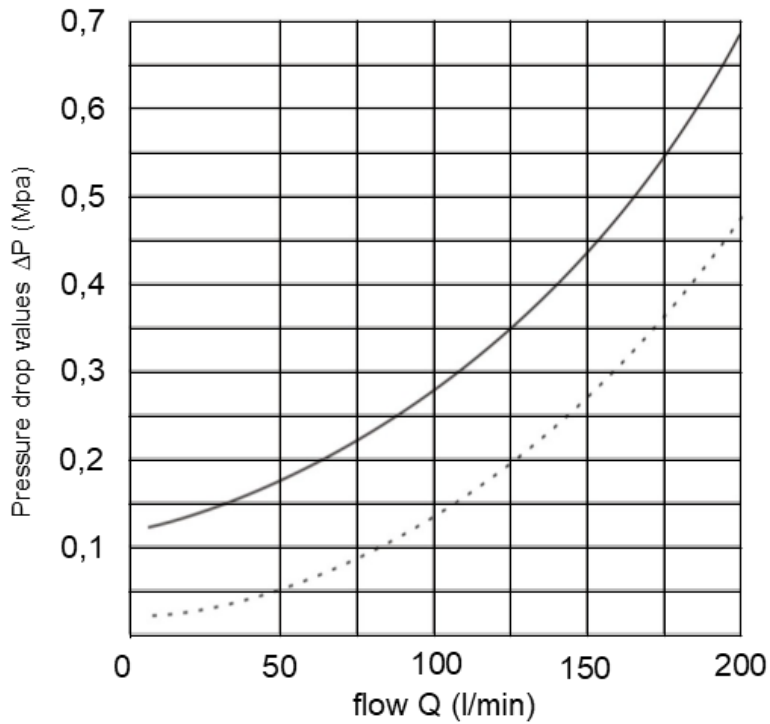


**Ordering codes (most frequently used)**

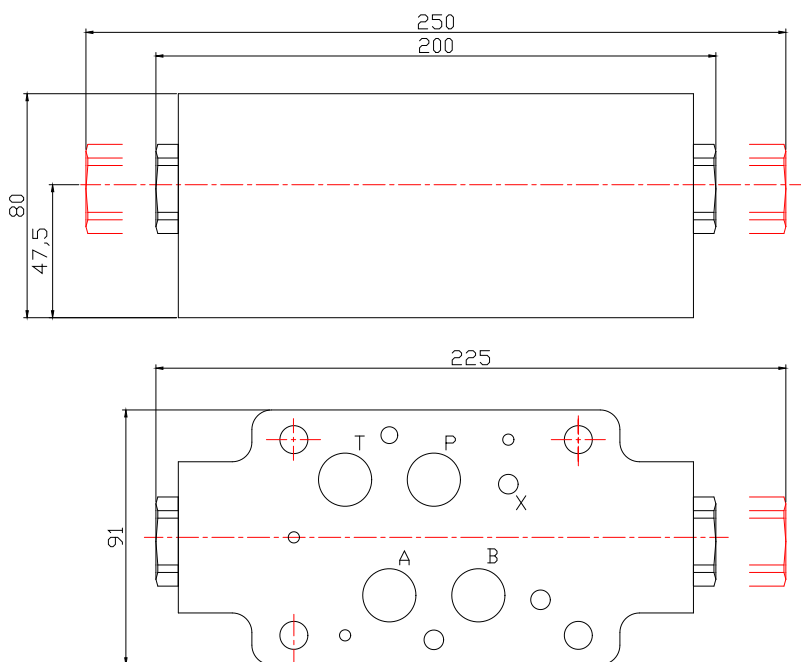
| Article code | Description            | Remark |
|--------------|------------------------|--------|
| QC100003     | QC-10-P-2.5-AB-F-X     |        |
| QC100004     | QC-10-P-2.5-A-F-X      |        |
| QS100002     | Sealing set QC size 10 |        |

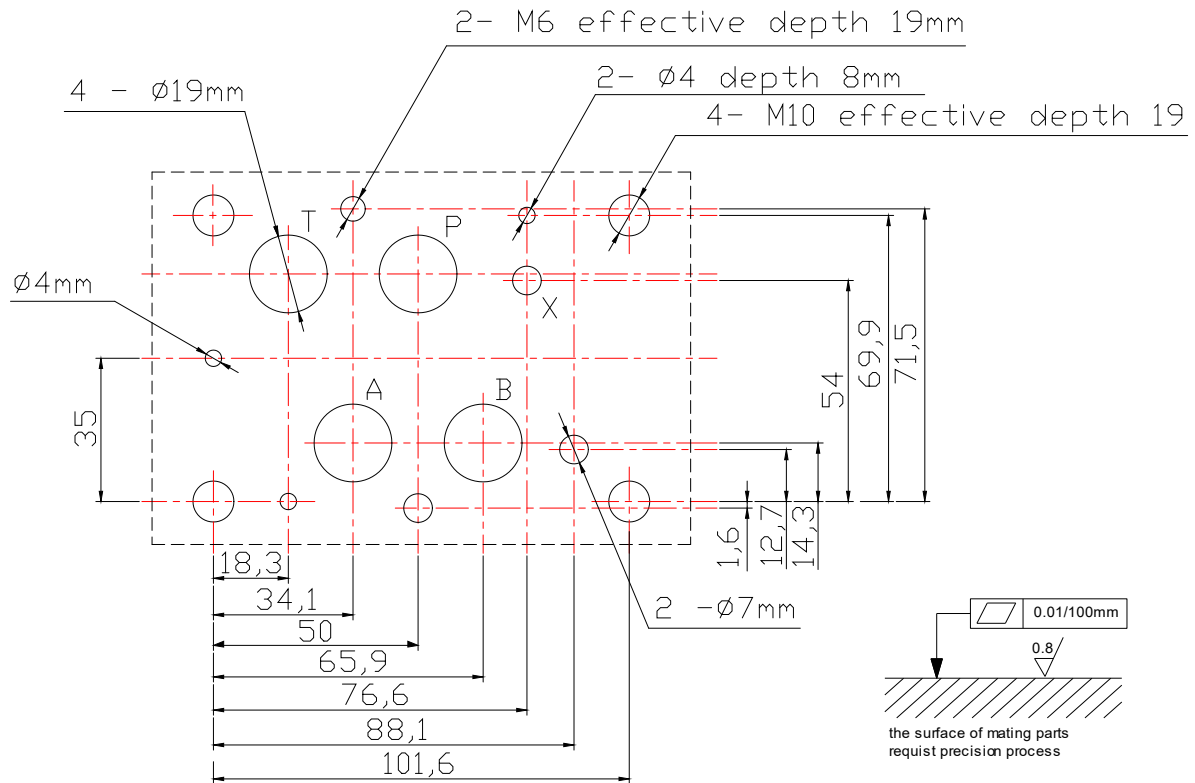
| Size | The maximum pressure [Bar] | The maximum flow [l/min] | Weight [kg] |
|------|----------------------------|--------------------------|-------------|
| 16   | 210                        | 200                      | 6.4         |

Pressure drop characteristics



**Installation Dimension NG16**





**Ordering codes (most frequently used)**

| Article code | Description      | Remark |
|--------------|------------------|--------|
| QC100005     | QC-16-P-3-AB-F-X |        |